



**CLOSE-COUPLED  
CENTRIFUGAL PUMP  
DIN 24255 SERIES**

## APPLICATIONS

- For civil and industrial applications
- For water supply
- For heating, conditioning, cooling and circulation plants
- For irrigation & sprinkler
- For clean, non-aggressive, non-explosive liquids / water without abrasives, solid particles and fibres.
- For fire fighting applications

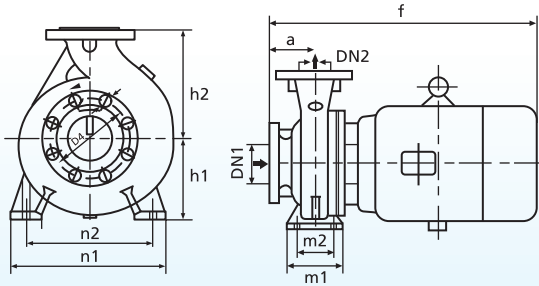
## OPERATING CONDITIONS

- Liquid temperature - 10°C to 90°C
- Room temperature up to 40°C
- Total suction lift up to 7m
- Maximum permissible working pressure up to 10 bar (16 bar for specified Models)
- Continuous duty
- Max Liquid viscosity : 5°E

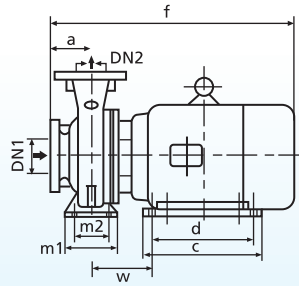
Tests may be carried out in accordance with ISO 2548 class C on request.

CLD	M <sup>3</sup> /h l/s	0	3	3.6	4.2	4.8	5.4	6	6.6	7.2	8.4	9.6	10.8	12	13.2				
		0	0.8	1.0	1.2	1.3	1.5	1.6	1.8	2.0	2.3	2.6	3	3.3	3.6				
25/16A/1.5	H (m)	31	31	30.7	30.5	30	29.5	28.5	28	27	26	23							
25/160/2		38	36	35.8	35.6	35	34.5	34	33.5	33	32	28	27						
25/20A/3		49	48	48	47	46.5	46	45.5	45	44	43	42	40	38					
25/20/4		58	58	57	57	56.6	56	55.5	55	55	54	52	51	48	45				
25/19/5.5		100	98	97	96	94	92	90	88	85	80	72							
CLD	M <sup>3</sup> /h l/s	0	6	9	12	15	18	21	24	27	30	36	42	48	54	60	72	84	96
		0	1.67	2.5	3.33	4.17	5.0	5.83	6.67	7.5	8.3	10.0	11.67	13.33	15.0	16.67	20.0	23.33	26.67
32-16/2	H (m)	24.7	24.1	23	21.5	19.6	17.2	14.1											
32-16/3		29	28.5	27.3	25.7	23.8	21.4	18.5	14.8										
32-16/4		36.8	36.4	35.4	34.2	32.8	31.1	28.8	26	22.3									
32-20/5.5		47.5	47	46.7	45	44	41	37.5	33										
32-20/7.5		55	55	54.5	53.5	52	50	47	43										
32-20/10		68	67.5	67	66	64	62.5	59	56	52									
32-26/15		78		78	77.5	76	75	72	70	65	56								
32-26/20		97		96.5	96	95	93	91	88	85	79								
40-16/4		30		30.1	30	29.6	29	28.2	27.1	25.9	24.4	21							
40-16/5.5		35.4		35.6	35.5	35.3	35	34.2	33.2	32	30.6	27.3							
40-20/7.5		46.7		47	46.8	46.4	45.6	44.5	43.5	41.6	39.9	35.8							
40-20/10		56.4		57.8	58	57.9	57.6	56.9	56	54.7	53	48.9	43.9						
40-26/15		75.5		74.6	74.2	73.5	72.7	71.7	70.4	69	67.2	62.5	56						
40-26/20		91.5		90.4	89.8	89.3	88.5	87.5	86.6	85.5	84	80.5	76						
50-13/2		20			18.5	18	17.5	17	16.5	16	12	10							
50-13/3		16.5					15.7	15.6	15.5	15.2	14.8	14.5	13.7	13.2	12.5	11.3			
50-13/4		19.5					19.2	19	18.8	18.7	18.5	18.2	17.6	17.2	16.6	15.6	13.2		
50-13/5.5		23					22.8	22.7	22.6	22.5	22.4	22	21.5	21	20.4	19.4	17.2		
50-16/7.5		34					33.5	33.2	33	32.7	32.5	32	31.2	30.5	29	28	24		
50-16/10		39					38.5	38.4	38.2	38.1	38	37.2	36.5	35.7	34.5	33.2	29.5		
50-20/15	53.5					53.5	53.4	53.2	53	52.5	52	50	48	46	43	36			
50-20/20	65					65	64.7	64.5	64	63.5	63	62	61	58.3	56.5	48	40		
50-26/30	90									88.8	87.7	86.1	84.5	82.7	80.5	75.2			
CLD	M <sup>3</sup> /h l/s	0	30	36	48	60	72	84	96	108	120	132	144	156	168	180	198	216	240
		0	8.33	10.0	13.33	16.67	20.0	23.33	26.67	30.0	33.33	36.67	40.0	43.33	46.67	50.0	55.0	60.0	66.67
65-14/7.5	H (m)	20.3	19.7	19.4	18.8	18	16.8	15.3	13.7	11.7									
65-14/10		22.5	22	21.7	21.4	20.6	19.5	18	16.7	15	12.8								
65-16/15		35	34.7	34.6	34.3	33.5	32.5	31.5	29.4	27.3	25	22	18.7						
65-16/20		42.5	42.2	42	41.4	40	39	38	37	35	33	31	29	26	23	20			
65-20/20		43				44.5	43.7	42.3	40.5	38	35.3	32							
65-20/25		47.5				49.3	48.5	47.3	45.5	43.5	41	38							
65-20/30		56.5				56.5	55.7	54.7	53.5	51.6	49.6	47.1	44						
80-16/15		26.5			26.5	25.3	25	24.2	23.5	23	22.5	21.7	21	20	18.5	17	14		
80-16/20		32			32	31.6	31.5	31	30	29	28	27.5	27	26	25	23	21	18	
80-16/25		37			37	36.5	36	35.5	35	34.5	33.3	32.6	32	31.5	30.5	29	27	25	21
80-16/30	39			39	38.8	38.5	38.5	38.3	38	37.2	36.6	36	35	34	33	31.5	29	25	

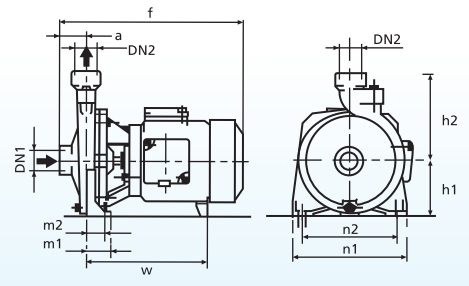
## INSTALLATION DIMENSIONS (mm)



**FIG 2**



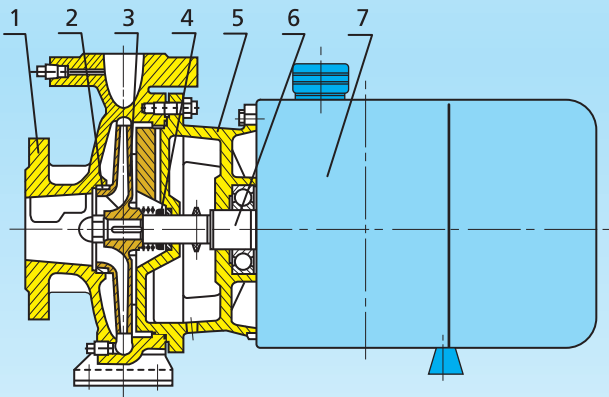
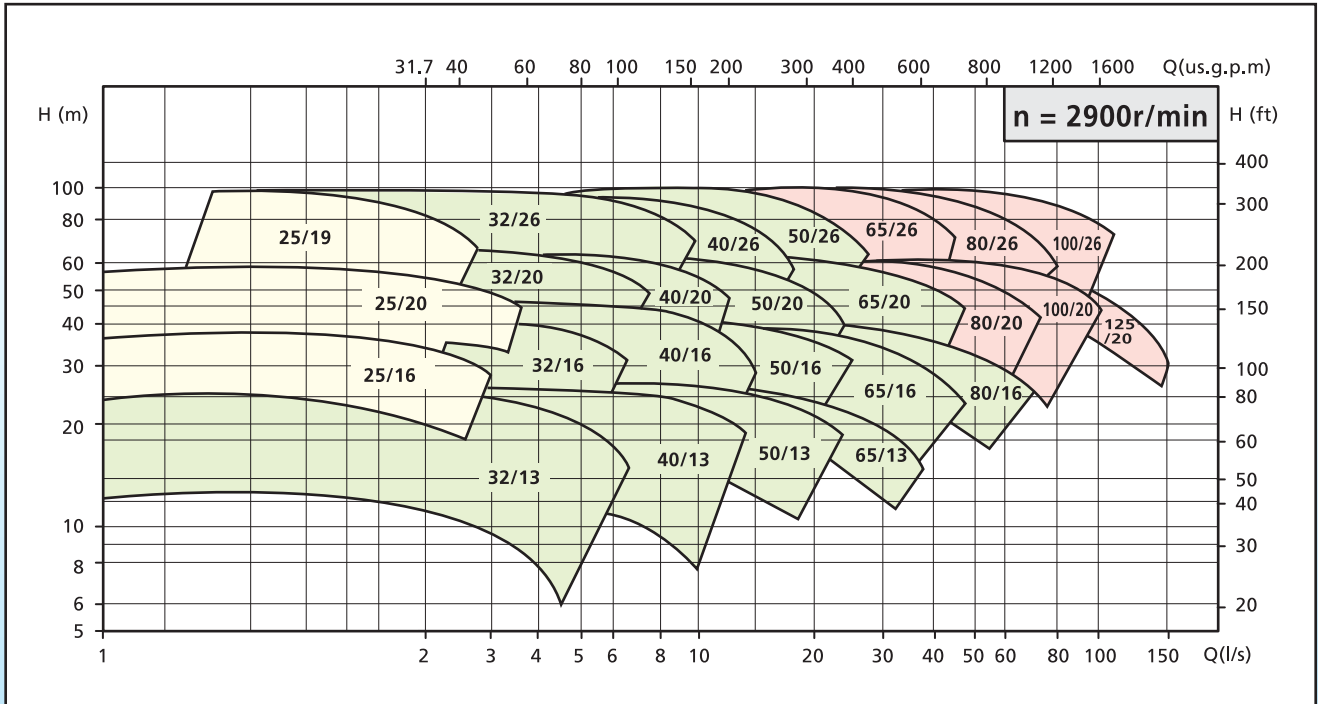
**FIG 3**



**FIG 1**

MODEL	DN1	DN2	a	f	h1	h2	m1	m2	n1	n2	c	d	w	KG	HP	FIG
CLD25/16A-1.5	G1 1/2"	G1"	60	405	100	160	75	55	195	150			255	19	1.5	1
CLD25/16-2	G1 1/2"	G1"	60	405	100	160	75	55	195	150			255	25	2	1
CLD25/20A-3	G1 1/2"	G1"	62	445	125	180	90	65	250	200			285	30	3	1
CLD25/20-4	G1 1/2"	G1"	62	475	125	180	90	65	250	200			315	40	4	1
CLD25/19-4	G1 1/2"	G1"	98	520	140	180	100	70	240	190			340	44	4	1
CLD25/19-5.5	G1 1/2"	G1"	98	565	140	180	100	70	240	190			360	50	5.5	1
CLD32/16/2	50	32	80	453	132	160	100	70	240	190				40	2	2
CLD32/16/3	50	32	80	478	132	160	100	70	240	190				42	3	2
CLD32/16-4	50	32	80	496	132	160	100	70	240	190				45	4	2
CLD32/20-5.5	50	32	80	511	160	180	100	70	240	190				55	5.5	2
CLD32/20-7.5	50	32	80	562	160	180	100	70	240	190	280	230	137.5	65	7.5	3
CLD32/20-10	50	32	80	562	160	180	100	70	240	190	280	230	137.5	70	10	3
CLD32/26-15	50	32	100	611	180	225	125	95	320	250	320	270	136	98	15	3
CLD32/26-20	50	32	100	691	180	225	125	95	320	250	350	300	148	106	20	3
CLD40/16-4	65	40	100	516	132	160	100	70	240	190				45	4	2
CLD40/16-5.5	65	40	100	531	132	160	100	70	240	190				51	5.5	2
CLD40/20-7.5	65	40	100	582	160	180	100	70	265	212	280	230	137.5	65	7.5	3
CLD40/20-10	65	40	100	582	160	180	100	70	265	212	280	230	137.5	70	10	3
CLD40/26-15	65	40	100	611	180	225	125	95	320	250	320	270	136	98	15	3
CLD40/26-20	65	40	100	691	180	225	125	95	320	250	350	300	148	106	20	3
CLD50/13-3	65	50	100	498	132	160	100	70	240	190				42	3	2
CLD50/13-4	65	50	100	516	132	160	100	70	240	190				60	4	2
CLD50/13-5.5	65	50	100	531	132	160	100	70	240	190				64	5.5	2
CLD50/16-7.5	65	50	100	582	160	180	100	70	265	212	280	230	137.5	66	7.5	3
CLD50/16-10	65	50	100	582	160	180	100	70	265	212	280	230	137.5	72	10	3
CLD50/20-15	65	50	100	611	160	200	100	70	265	212	320	270	136	100	15	3
CLD50/20-20	65	50	100	691	160	200	100	70	265	212	270	210	193	108	20	3
CLD50/26-30	65	50	100	776	180	225	125	95	320	250	311	241	204	153	30	3
CLD65/13-7.5	80	65	100	582	160	180	125	95	280	212	280	230	137.5	70	7.5	3
CLD65/13-10	80	65	100	582	160	180	125	95	280	212	280	230	137.5	73	10	3
CLD65/16-15	80	65	100	611	160	200	125	95	280	212	320	270	141	98	15	3
CLD65/16-20	80	65	100	691	160	200	125	95	280	212	270	210	193	106	20	3
CLD65/20-20	80	65	100	691	180	225	125	95	320	250	350	300	148	125	20	3
CLD65/20-25	80	65	100	746	180	225	125	95	320	250	400	350	145	145	25	3
CLD65/20-30	80	65	100	776	180	225	125	95	320	250	311	241	204	167	30	3
CLD80/16-15	100	80	125	636	180	225	125	95	320	250	320	270	141	122	15	3
CLD80/16-20	100	80	125	716	180	225	125	95	320	250	350	300	148	139	20	3
CLD80/16-25	100	80	125	771	180	225	125	95	320	250	400	350	145	150	25	3
CLD80/16-30	100	80	125	801	180	225	125	95	320	250	311	241	204	183	30	3

## SELECTION CHART



## MATERIALS OF CONSTRUCTION

		STANDARD	SPECIAL EXECUTION
1	Casing	Cast Iron HT-200	Cast Iron HT-250
2	Wear Ring	Cast Iron	Cast Iron
3	Impeller	Bronze	Cast Iron / Stainless Steel
4	Mechanical Seal	Carbon / Silicon Carbide or special materials to meet requirement	
5	Adaptor	Cast Iron	Cast Iron
6	Shaft	Stainless Steel SS 420	Stainless Steel SS 420
7	Motor	Squirrel-cage motor totally enclosed fan cooled. 2-pole, 50 Hz. 2900 rpm IP54 Class F insulation 3 phase 400/415 V Other Voltages and Frequencies upon request	

For enquiries, please contact :